

## **COMFORT ON ROAD, AT EASE ON TRACKS.**

### The driving comfort of a real on-road tyre!

On roads, the MICHELIN Latitude Cross offers a quiet ride comparable to on-road tyres.

- The MICHELIN Latitude Cross is as quiet as the MICHELIN Latitude Tour HP (recognized for its comfort)\*.
- The MICHELIN Latitude Cross is quieter than one of its predecessor, the MICHELIN 4x4 Synchroné \*\*.

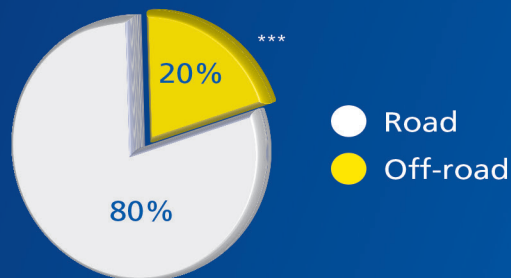
### Exceptionally long mileage!

The MICHELIN Latitude Cross delivers exceptionally long tread life, worthy of the reputation of MICHELIN tyres.

### An on-road tyre with off-road performances!

The new MICHELIN Latitude Cross offers versatile off-road performances on any kind of surface:

- MUD: excellent feeling of grip, good tread leaning, good acceleration response in first and second gear.
- DIRT ROADS: firm downhill grip and uphill traction.
- ON SLOPES: excellent lateral grip and good feeling.



**Speed indices: T to H**

**Series: 80 to 55**

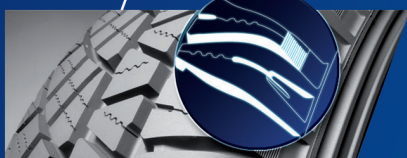
**Seat Ø: 15" to 18"**



\* The 235/65 R 17 MICHELIN Latitude Cross is as quiet as the MICHELIN Latitude Tour HP (pass-by noise test, ISO 2001/43/EC).  
\*\* The 245/70 R 16 MICHELIN Latitude Cross is 1dBA quieter than the MICHELIN 4x4 Synchroné (pass-by noise test, ISO 2001/43/EC).  
\*\*\* The percentage ON/OFF road split is for reference purposes only.  
Please consult with a MICHELIN Authorized Dealer for professional advice on the right tyre and performance to match your vehicle.



## ***"SILENT" TREAD DESIGN***



- The unique curved tread block design: reduced rolling noise all along the tyre life.
- A large number of different sized and spaced shoulder blocks: quieter running.

## ***"TERRAIN-PROOF COMPOUND"***



- The tread compound is highly resistant to gravel abrasion Exceptionally long mileage:
    - In multi-purpose use: on any road surfaces, tracks,
    - With loaded vehicles,
    - Or with a trailer.
- MICHELIN Terrain-Proof Compound technology has already been successfully applied on the MICHELIN Latitude Tour HP.

## ***THE TREAD DESIGN***



- An aggressive tread design: unrivalled traction on tough surfaces.
- A large number of biting edges: More grip (traction and braking) on demanding surfaces.
- The unique shoulder design: offset, very open and descending far down the sidewalls: excellent traction on soft slippery slopes.

